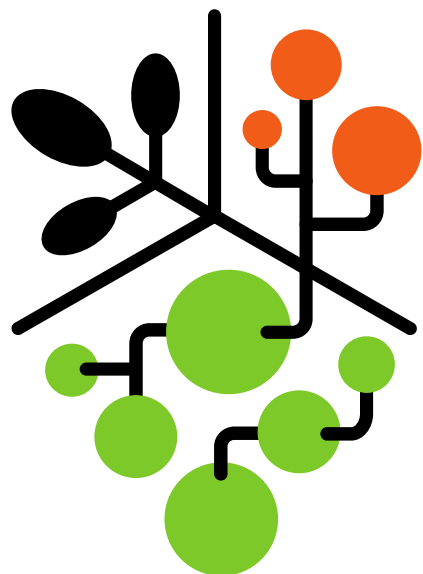




*Important information to communicate  
to your stand decorator and transport  
provider*



**SITEVI**

**30 NOV. - 02 DÉC. 2021**  
**PARC DES EXPOSITIONS**  
**MONTPELLIER - FRANCE**

SALON INTERNATIONAL DES ÉQUIPEMENTS ET SAVOIR-FAIRE POUR LES  
PRODUCTIONS VITI-VINICOLES, OLÉICOLES, ARBORICOLES ET MARAÎCHÈRES

# New Process for Truck Access to SITEVI 2021 Set-up / Break-down



# New Process for Truck Access for Set-up & Break-down SITEVI 2021

# Actions taken to improve accessibility for set-up and break-down

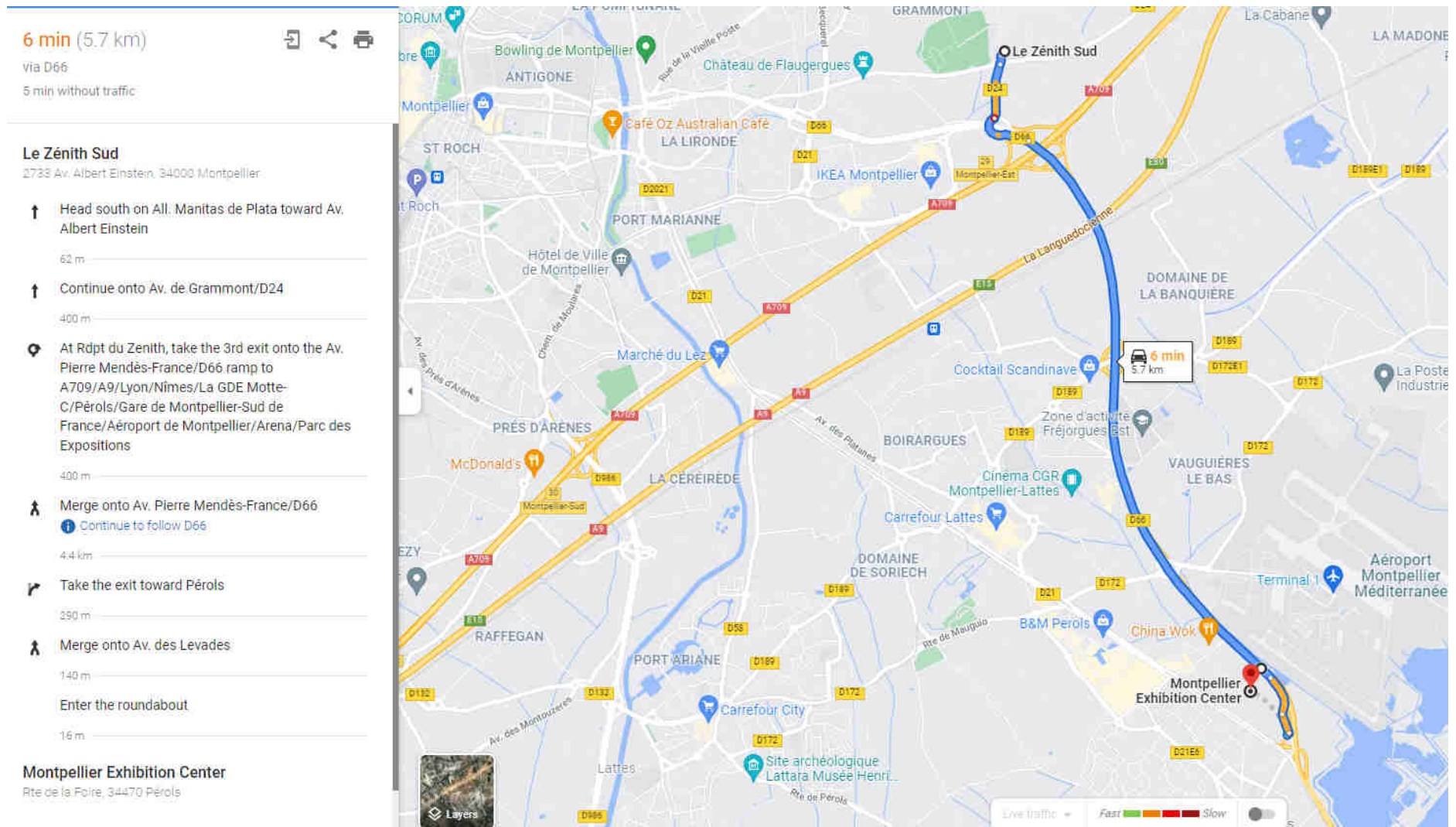
- **Zenith** : From 25 November 2021 to the end of break-down, all trucks must arrive via the Zenith Sud car park, where they can collect their pass to enter the exhibition centre without having to queue on the roads around it
- **Exhibition Centre** : Creation of four logistics areas on the exhibition centre's grounds so that trucks can park close to the relevant stands for loading and unloading
- **Exhibition Centre**: Marking on the ground of parking spaces for trucks during assembly and dismantling and for outdoor stands for a better management of the space on the Exhibition Centre

# Buffer parking area: Zenith Sud

- The company Clamageran will register truck arrivals and regulate traffic for set-up and break-down at the Zenith Sud buffer parking area.
- An informational memo and a form will be sent to you in order to identify your delivery needs for set-up and break-down.
- The form will allow us to gather information about the types of vehicles being chartered, the type of handling being requested, and the scheduled arrival and removal dates for your equipment and other materials.
- Once that information has been collected, a timetable for truck arrivals will be produced and you will be sent a pre-pass for your transport provider. That pre-pass will allow us to quickly identify your transport provider on arrival at the Zenith Sud car park.
- Once parked in the Zenith waiting area, Clamageran will give the driver an estimated time for them to unload the truck and then an entry pass once a spot becomes available in your stand's loading/unloading zone at the exhibition centre.
- Four logistics areas are being created to absorb as many trucks as possible during key times.

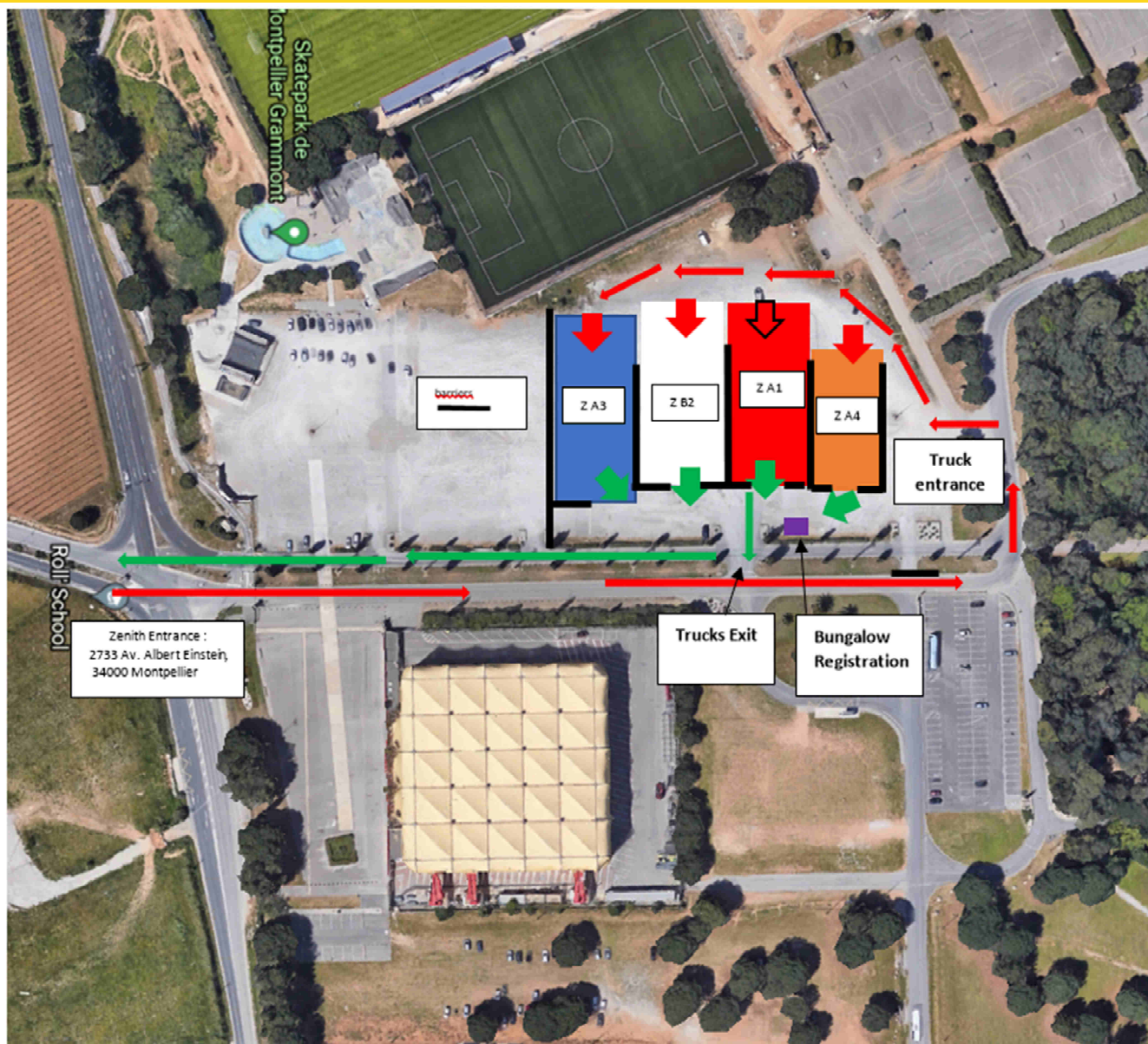
# Zenith buffer parking area

# Route from Zenith to Exhibition Centre





# Layout of the Zenith parking area



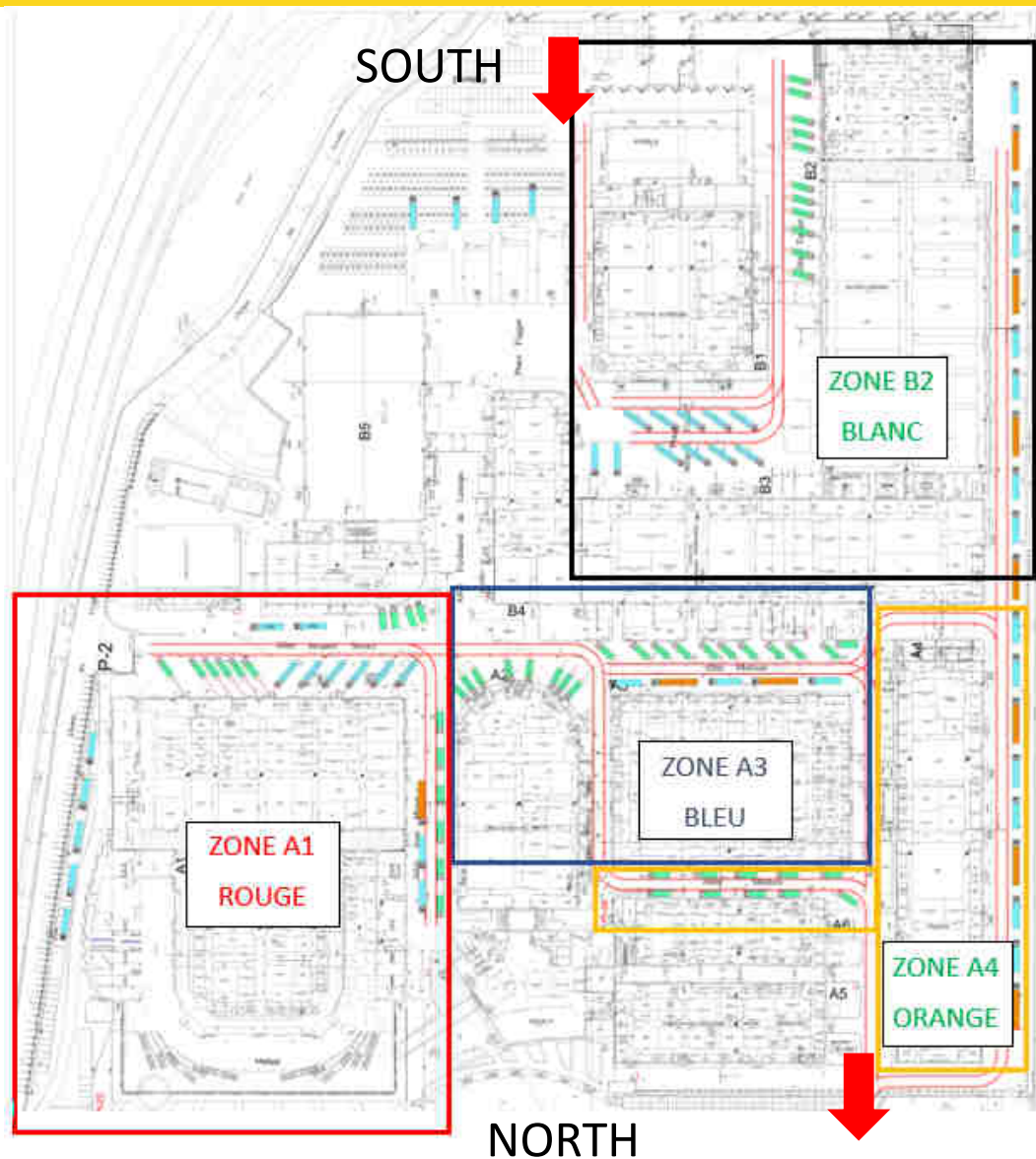
# Zenith car park opening hours

<div> <div>SITEVI 2021</div> <div>Zenith Parking Opening</div> </div>											
From November 30 to December 2, 2021	J 25/11	V 26/11	S 27/11	D 28/11	L 29/11	M 30/11	M 1/12	J 2/12	V 3/12	S 4/12	D 5/12
<b>Zenith</b>											
Truck reception schedule	6h00 - 18h00	6h00 - 18h00	7h00 - 18h00	7h00 - 12h00	6h00 - 20h00	CLOSED		15h00 - 22h00	6h00 - 18h00	CLOSED	



# Loading & unloading zones at the exhibition centre

# Loading/unloading zones



- Trucks enter from the south (B) and exit from the north (A).  
↓
- Dedicated personnel will be in position in each zone to indicate where vehicles are to park. They will ensure that any trucks attempting to park were first registered at Zenith and that they have a pass allowing them to park in that loading/unloading zone (pass provided at the exit to the buffer parking area, stating the loading/unloading zone and the authorized time of entry to the exhibition centre).
- The on-site personnel will also be responsible for announcing that a truck is leaving their loading/unloading zone and asking that another truck be sent over from the buffer parking area.

# Summary of the truck arrival process for set-up & break-down

- Arrive at the Zenith car park
- Registered by Clamageran to park in the relevant loading/unloading zone
- Collect official pass from Clamageran's bungalow
- Added to the wait list for access to the designated loading/unloading zone at the exhibition centre, with an estimated time of entry given to the driver
- Wait for a call from the exhibition centre when a spot is about to become free in the relevant zone for the truck waiting at Zenith
- Truck authorized to depart from Zenith A forklift and driver will wait for the truck at the south entrance and will then guide the truck to the loading/unloading zone.  
If no handling has been planned, the driver will be given a map, and a person in charge of the zone will meet the driver and provide guidance.
- Drivers are asked to only exit the truck's cab to remove the tarp from the trailer and then wait in the cab for unloading to be completed, when they can reattach the tarp.

# Types of vehicles that must go through the buffer parking area

- **Heavy goods vehicles:**



- **Light utility vehicles (20 m<sup>3</sup> or more)**

- ***Small trucks:*** 20 m<sup>3</sup> to 40 m<sup>3</sup>

- ***Large trucks:*** with a volume of 30 m<sup>3</sup> to 40 m<sup>3</sup>



# Vehicles that can go directly to the exhibition centre

## **Before 25 November 2021:**

Exhibitors with special set-up permission

## **Beginning on 25 November 2021:**

- Light vehicles: cars only in the exhibition centre's car park → no access onto the grounds (unloading by hand and by hand truck); a carriage service will be available
- Vans & pick-ups: under 20 m<sup>3</sup>, may park on the exhibition centre's grounds outside the designated truck zones



Contact : Mr DIALLO Laurent  
laurent.diallo@comexposium.com

# THE END